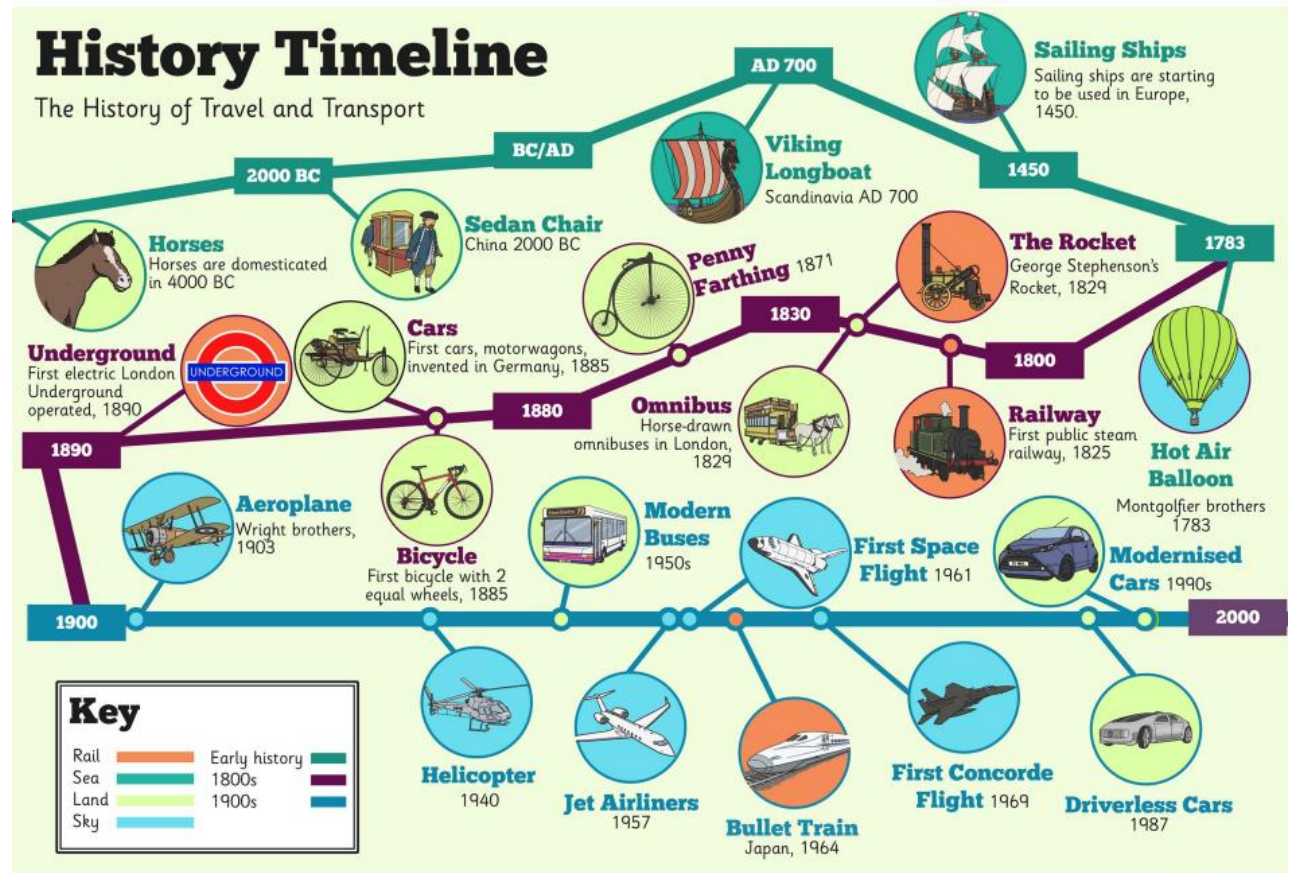


Planes, Trains and Automobiles Knowledge Organiser

Vocabulary

Travel	Moving from one place to another
Transport	Carrying people or objects from one place to another
Steam engine	A steam engine uses steam from boiling water to make it move. The steam pushes the moving parts.
Petrol/com bustion engine	Combustion means burning. A petrol engine burns petrol to make it move
Electric cars	Electric cars use electricity to make the motor turn.



George Stephenson

1781-1848



George was an engineer. He built the first passenger steam train in the world called Locomotive Number 1 in 1814. In 1830 he built the fastest steam train – The Rocket.

The Wright Brothers

Orville Wright 1871-1948

Wilbur Wright 1867-1912



Orville Wright



Wilbur Wright

Orville and Wilbur Wright were two brothers, born in America. Their interest in flight began when their father bought them a toy 'helicopter'. They made and sold bicycles but then began to experiment with creating their own flying machine! Their first aeroplane, the Wright Flyer, successfully flew in front of 5 people in 1903.

Amelia Earhart

1897-1939



Amelia was born in America in 1897. She is famous for being the first woman to fly on her own across the Atlantic Ocean in 1932. In 1937 Amelia set off to fly around the world. Unfortunately she hit bad weather and her plane disappeared. She was never found.